

Sedgwick County DMC:

Detention Risk Screening Tool

October 25, 2007



DEMOGRAPHICS

Population 466,061

Urban, Suburban, Rural

Wichita (largest city) 360,000

Racial Composition Youth

All Minorities 28%

AA 12%, Hispanic 11%, Asian 4%

SEDGWICK COUNTY



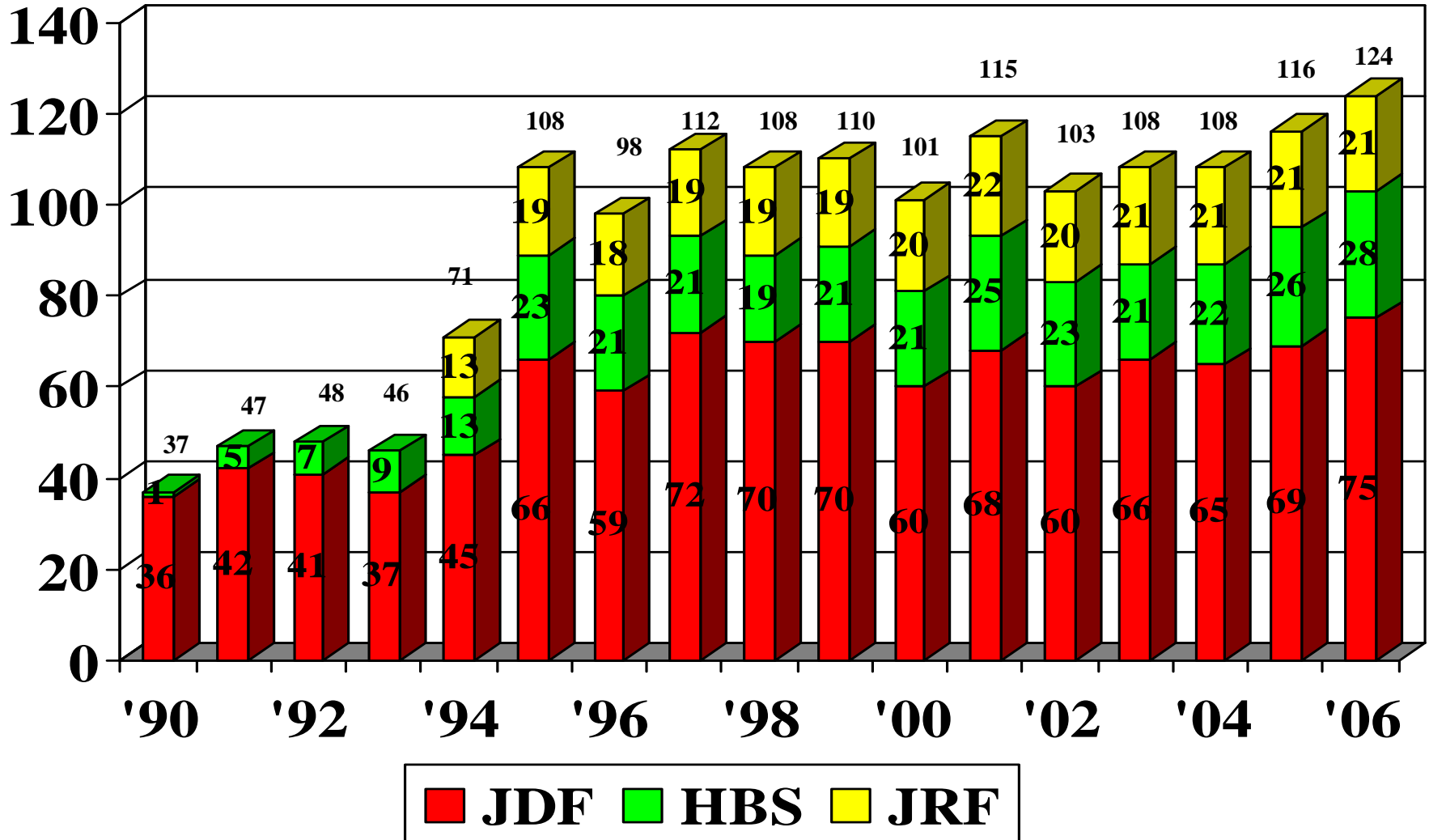
Sedgwick County...
working for you

WWW.SEDGWICKCOUNTY.ORG

Sedgwick County Juvenile Detention

History – Growth In Demand

Average Daily Populations



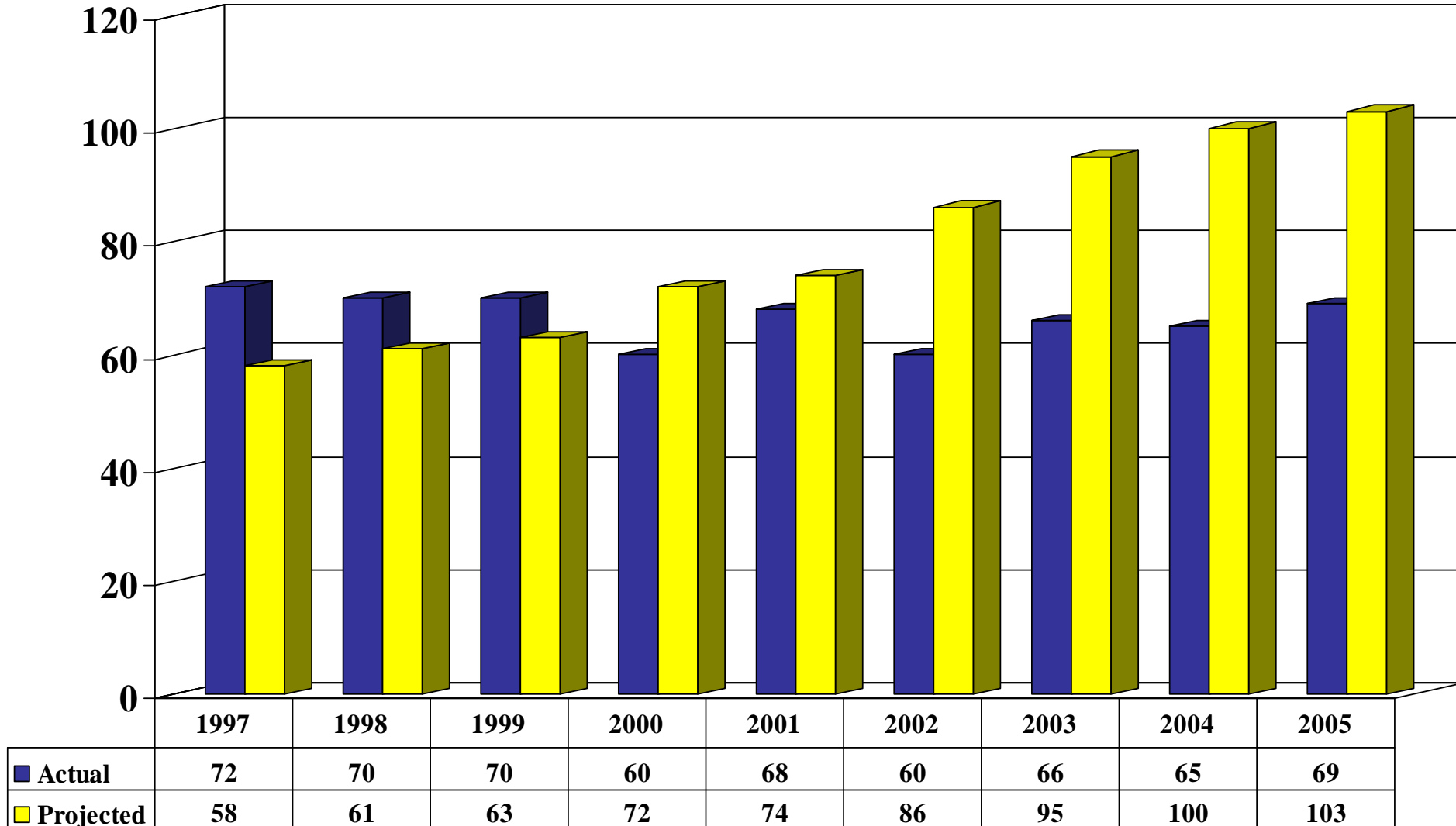
Role of Technical Assistance

- **NCCD** - detention population projections.
- **Wichita State University** partnership - ongoing consultation, research and evaluation.
- **OJJDP** – Development Services Group



SG. Co. Juvenile Detention Facility

Population Actual vs. Projected Averages



Projections provided by the National Council on Crime and Delinquency in 1996.

Sedgwick County Juvenile Detention Strategy to Reduce Admissions

- **1996** – Established Detention Utilization Committee
- **1997** – Detention Risk Screening Instrument
- **1999** – Study Validating Risk Screening Instrument
- **2000** – Study of Detention Practices



Risk Screening Tool

- **Development – 1994 Study & Data**
- **Implementation – DUC / Court Rule**
- **Review/Modifications – Data/DUC**
- **Validation – WSU Study 1999**
- **Tracking Overrides – DOC/DUC**
- **Study Detention Practices - 2000**



Sedgwick County Juvenile Detention Study Results

Predictive Factors

- Severity of Offense (.814)
- Gender (.341)
- Age at Arrest (.279)
- Race (.203)

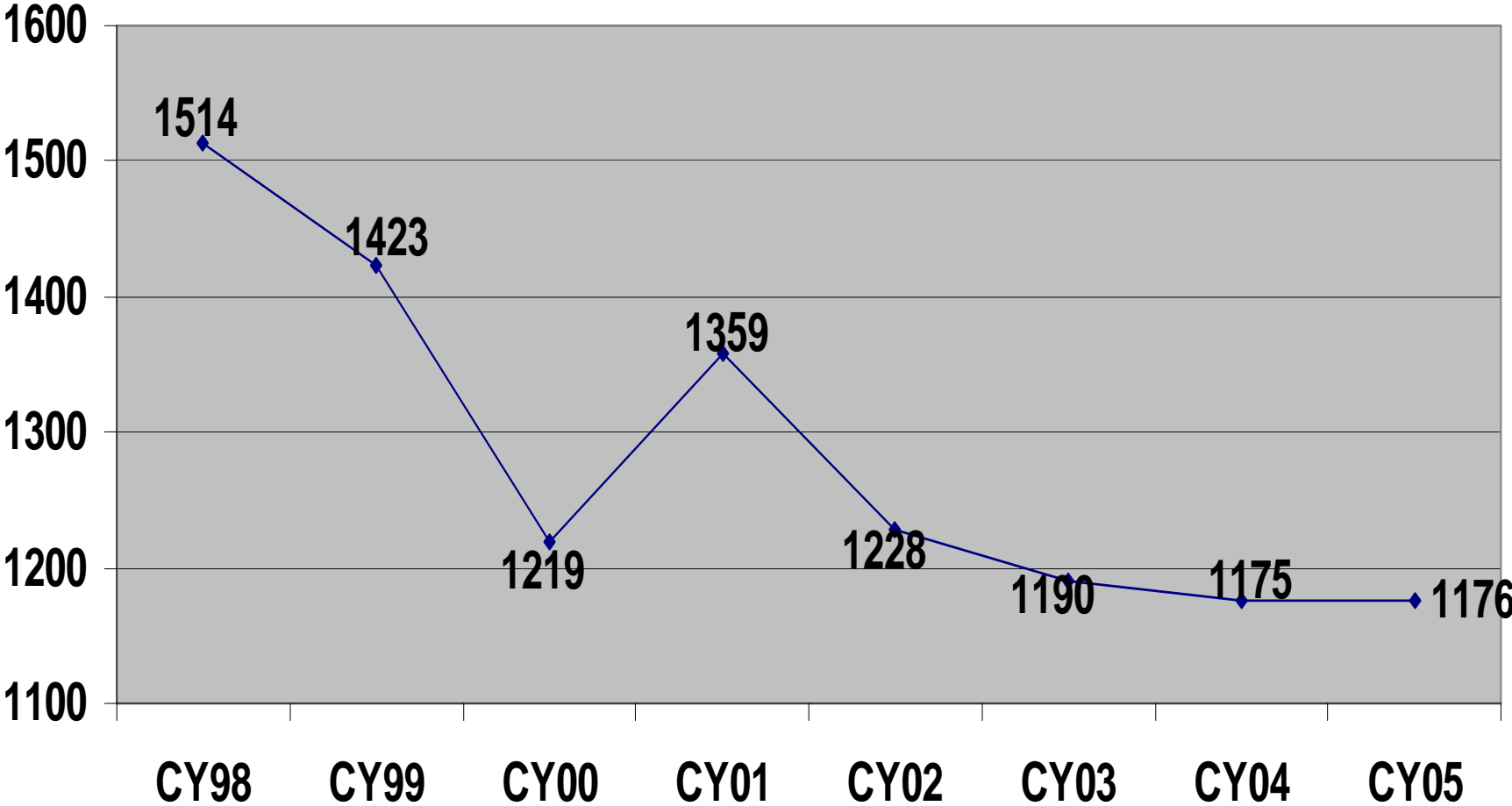


Risk Screening Elements

- Most Serious Current Offense
- Legal Status
- Aggravating Factors
- Mitigating Factors
- Detention Decision
- Overrides



Juvenile Detention Admissions (JDF) 1998 - 2005



Sedgwick County Juvenile Detention Relative Rate Index 2003-06

Admissions – New Offenses Only

African American	1.79
Hispanic	1.28
All Minority	1.58

